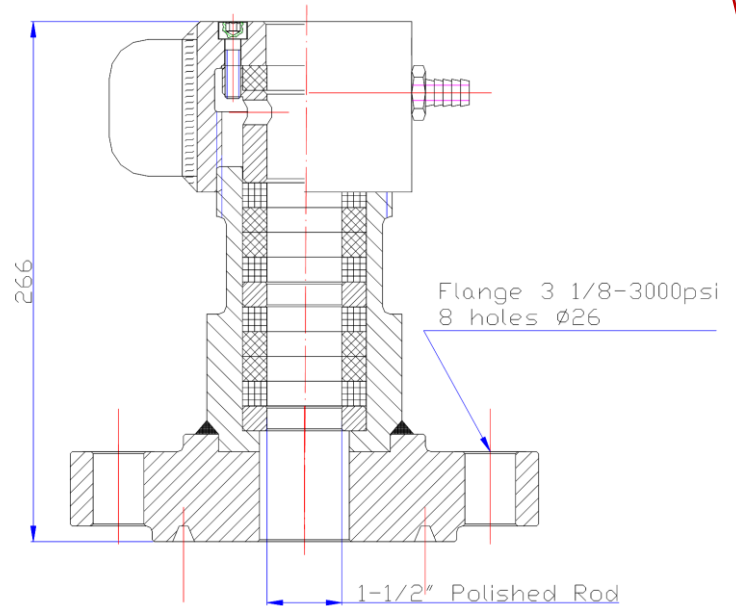
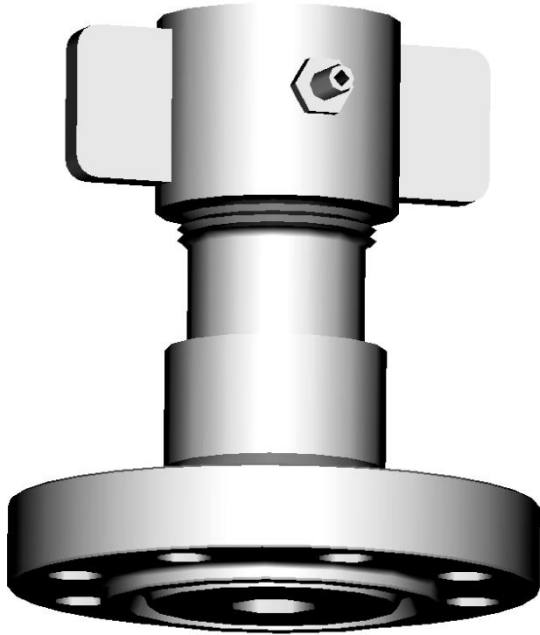




## Dual Pack Stuffing Box



### Features & Benefits:

- Integrated structure
- Dual packing for reliable sealing
- Solid compact design
- Trouble free operation for many applications
- Flanged connections for well installation

[www.canamservices.com](http://www.canamservices.com)

245, 6025-12<sup>th</sup> Street SE, Calgary, AB, Canada T2H 2K1

E-mail: [canam@canamservices.com](mailto:canam@canamservices.com)

Tel: 1(403) 543-0350, Fax: 1(403) 543-0351

