

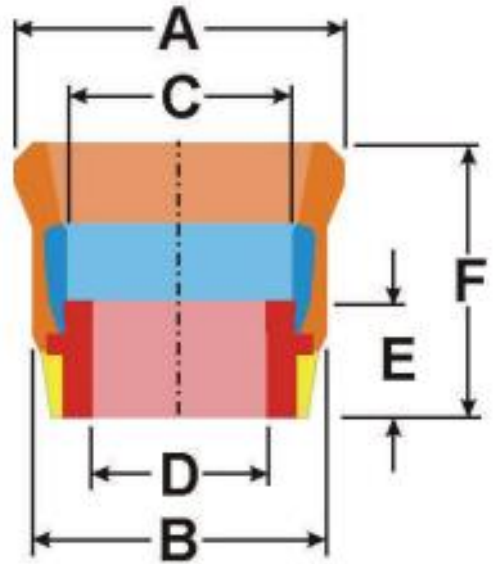
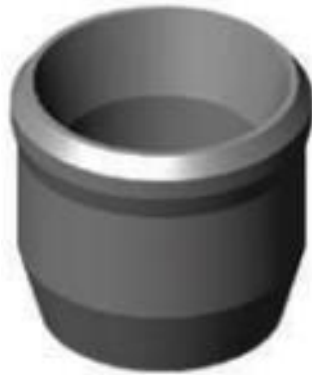
## Description

### Wire Packer Cups

4" – 20"

**Material:**

- HSN/ HNBR
- EPDM
- Viton
- Alfás
- Other available



**Durometer:** 60-90 Shore

## Specifications

Size	WF/FT	Casing ID	A	B	C	D	E	F
4"	9.5-11#	3.548/3.476	3.72	3.38	2.4	1.93	1.2	3.22
	11#	3.476	3.51	3.38	2.4	1.93	1.2	3.22
4 1/2"	9.5-11.6#	4.090/4.000	4.15	3.85	2.67	2.41	1.5	4.31
	12.6#-13.5#	3.958/3.920	4.08	3.74	2.74	2.41	1.5	4.34
5"	15-18#	4.408/4.276	4.62	4.16	2.73	2.41	1.5	4.25
	18-21#	4.276/4.126	4.34	4.11	2.7	2.41	1.5	4.25
	14-17#	5.012/4.892	5.2	4.75	3.42	2.91	1.48	4.95
5 1/2"	15-17#	4.950/4.892	5.12	4.82	3.42	2.91	1.41	4.95
	17-23#	4.892/4.670	4.98	4.55	3.38	2.91	1.56	5
	17-20#	4.892/4.778	5.09	4.65	3.42	2.91	1.53	4.95
5 3/4"	17-19#	5.190/5.090	5.28	4.88	3.36	2.91	1.42	4.97



Size	WF/FT	Casing ID	A	B	C	D	E	F
6 5/8"	24-28#	5.920/5.791	6.01	5.6	4.07	2.91	1.5	5.22
	24-28#	5.920/5.791	6.01	5.64	4.07	3.53	1.54	5.2
	32#	5.675	5.83	5.63	4.07	2.91	1.54	5.2
	32#	5.675	5.83	5.6	4.07	3.53	1.81	5.1
	32#	5.675	5.83	5.63	4.07	4.031	1.54	5.2
	17-20#	6.538/6.456	6.62	6.23	4.08	3.53	1.53	5.64
	17-20#	6.538/6.456	6.62	6.23	4.08	2.91	1.53	5.64
	17/20#	6.538/6.456	6.62	6.23	4.08	4.031	1.53	5.64
	17/23#	6.538/6.366	6.62	6.23	4.08	2.91	1.53	5.64
	17-23#	6.538/6.366	6.62	6.23	4.08	3.53	1.63	5.7
7"	17/23#	6.538/6.366	6.62	6.23	4.08	4.031	1.53	5.64
	22-24#	6.398/6.336	6.59	6.19	4.1	2.91	1.5	5.56
	22-24#	6.398/6.336	6.59	6.19	4.1	3.53	1.5	5.56
	22-24#	6.398/6.336	6.59	6.19	4.1	4.031	1.5	5.56
	22-26#	6.398/6.276	6.46	6.15	4.08	2.92	1.5	5.7
	22-26#	6.398/6.276	6.46	6.15	4.08	4.031	1.5	5.7
	22-26#	6.398/6.276	6.46	6.15	4.08	3.53	1.5	5.7
	26-30#	6.276/6.154	6.38	6.01	4.13	2.91	1.57	5.7
	26-30#	6.276/6.154	6.38	6.01	4.13	3.53	1.57	5.7
	26-30#	6.276/6.154	6.38	6.01	4.13	4.031	1.57	5.7
7 5/8"	32#	6.094	6.2	5.88	4.43	2.91	1.44	5.74
	32#	6.094	6.2	5.88	4.43	3.53	1.44	5.74
	32#	6.094	6.2	5.88	4.43	4.031	1.44	5.74
	24/26#	7.025/6.969	7.25	6.8	4.61	2.91	2.04	5.65
	24/26#	7.025/6.969	7.25	6.8	4.61	3.53	2.04	5.65
	24/26#	7.025/6.969	7.25	6.8	4.61	4.031	2.04	5.65
	29.7-33.7#	6.875/6.765	6.92	6.71	4.1	2.91	1.46	5.65
	29.7-33.7#	6.875/6.765	6.92	6.71	4.1	3.53	1.46	5.65
	29.7-33.7#	6.875/6.765	6.92	6.71	4.1	4.031	1.46	5.65
	39#	6.625	6.72	6.51	4.1	2.91		5.65
8 5/8"	39#	6.625	6.72	6.51	4.1	3.53	1.46	5.65
	39#	6.625	6.72	6.52	4.1	4.031	1.46	5.65
	20-24#	8.191/8.097	8.26	7.82	5.14	3.53	1.6	5.56
	20-24#	8.191/8.097	8.26	7.82	5.14	4.5	1.6	5.56
	28-36#	8.017/7.825	8.15	7.65	5.17	3.53	1.6	5.68
28-36#	8.107/7.825	8.15	7.65	5.17	4.53	1.6	5.68	

Size	WF/FT	Casing ID	A	B	C	D	E	F
<b>9 5/8"</b>	36-43#	8.921/8.755	9.05	8.57	5.06	3.53	1.6	6
	36-43#	8.921/8.755	9.05	8.57	5.06	4.53	1.6	6
	47/53#	8.681/8.535	8.85	8.31	5.85	3.53	1.56	5.98
	47/53#	8.681/8.535	8.85	8.31	5.85	4.53	1.571	6.526
	40/47#	8.835/8.681	8.9	8.54	5.03	3.53	1.6	6
	40/47#	8.835/8.681	8.9	8.54	5.03	4.53	1.6	6
	29.3/36#	9.063/8.921	9.21	8.69	5.02	3.53	1.6	6
	29.3/36#	9.063/8.921	9.21	8.69	5.02	4.53	1.6	6
<b>10 3/4"</b>	32.7-55.5#	10.192/9.760	10.2	9.7	5.88	3.53/ 4.53	1.58	6.87
<b>11 3/4"</b>	38-54#	11.150/10.880	11.23	10.45	6.12	4.53/ 3.53	1.65	6.94
<b>13 3/8"</b>	54.5-72#	12.615/12.347	12.71	12.22	6	4.53	1.72	7.65